

Global Pricing percentage alterations in Loadmaster

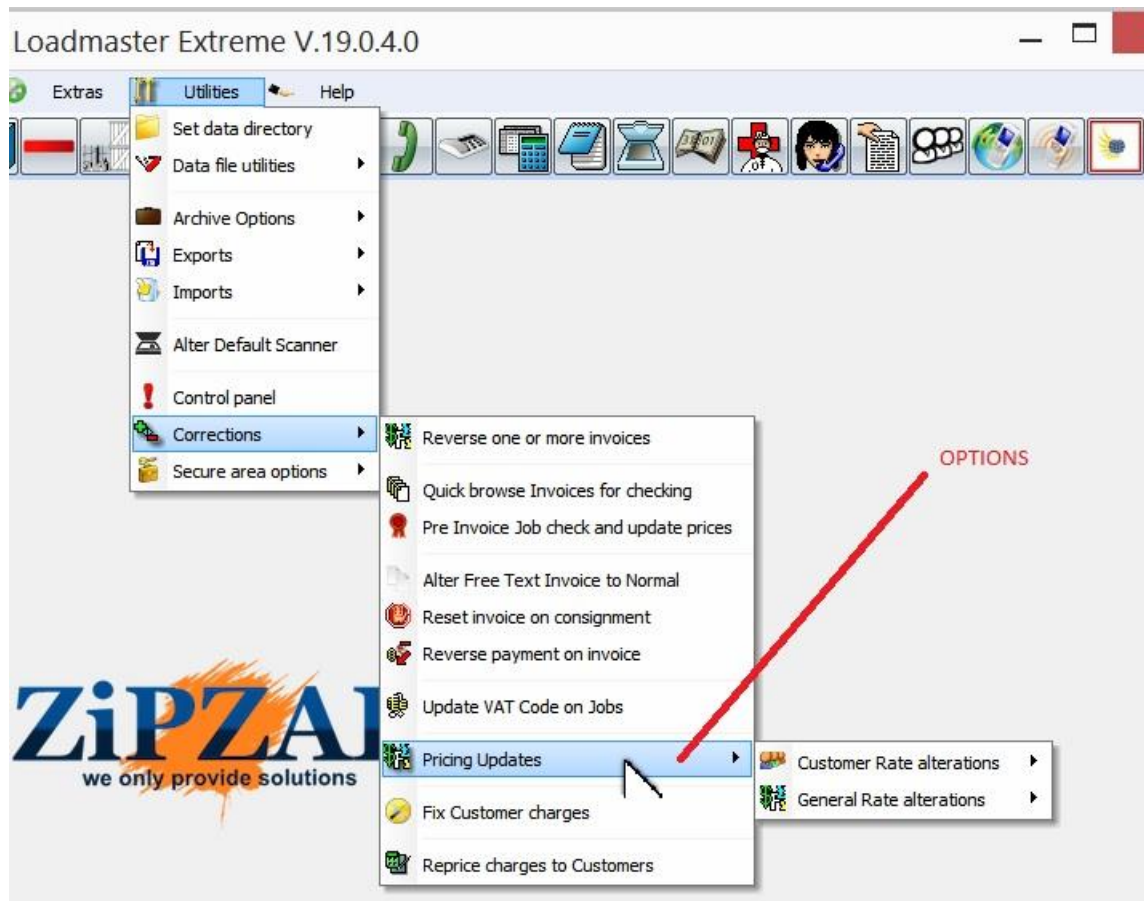
These simply alter the rates by a fixed percentage.

IT IS RECOMMENDED THAT YOU COPY THE FOLLOWING FILES BEFORE PERFORMING CHANGES. IF YOU FIND YOU HAVE MADE A MISTAKE THEN IT IS EASIER TO COPY THEM BACK THAT ADJUSTING THEM AFTERWARDS :-

PARAM.FIC & PARAM.NDX
ACCOUNTS.FIC ACCOUNTS.NBDX & ACCOUNTS.MMO
SURCHARGES.FIC & SURCHARGES.NDX
UNIQUE_SURCHARGES.FIC & UNIQUE_SURCHARGES.NDX
GAZETTEER.FIC & GAZETTEER.NDX
UNIQUE_GAZETTEER.FIC & UNIQUE_GAZETTEER.NDX
FREIGHTTYPES.FIC & FREIGHTTYPES.NDX

Before running any of the programs that perform alterations you should ensure that all other user are logged out.

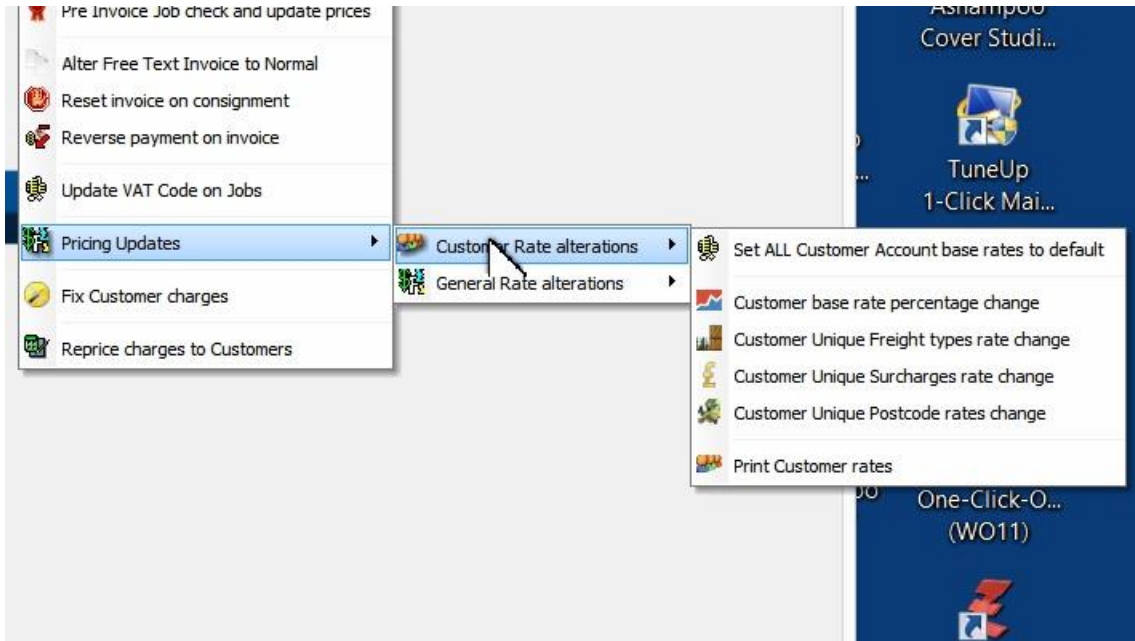
The programs appear here :-



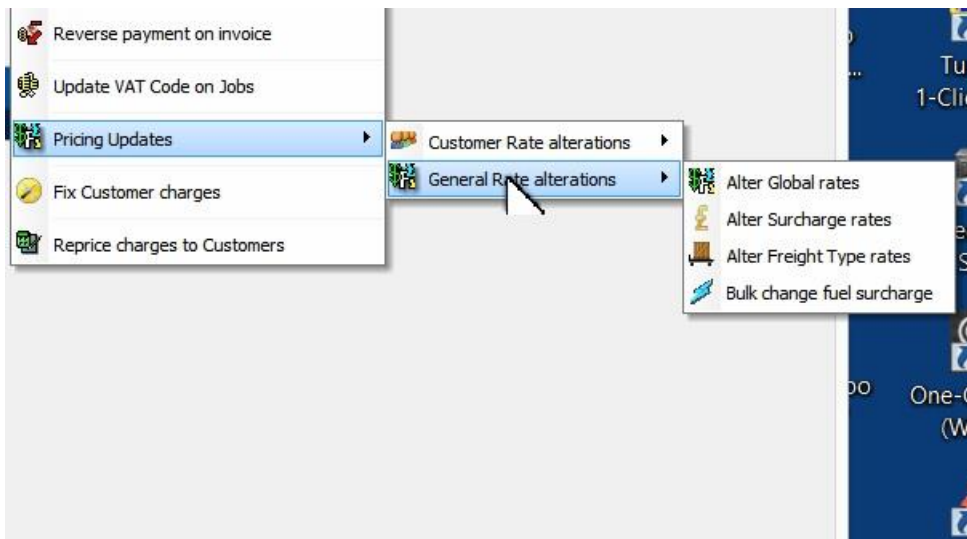
You can adjust Customer and General rates.

Global Pricing percentage alterations in Loadmaster

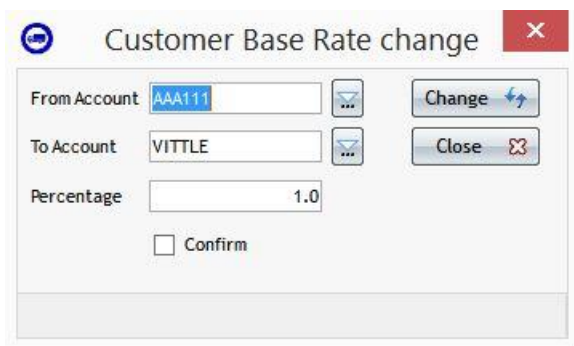
Customers :-



General :-



All these options open a similar screen to this :-



Example of process

Global Pricing percentage alterations in Loadmaster

Here is account 'TEST' and pricing region 1

Create/Amend Accounts

General Billing **Charges** Notes Inv Notes Custom Fortec

Account Ref Zone UK NORMAL ZONES

STANDARD
Base Charge per item up to items then per item

SATURDAY
Base Charge per item up to items then per item

TIME-CHECK-FT!!!
Base Charge per item up to items then per item

SMDY
Base Charge per item up to items then per item

Weight
Base Charge per kilo up to kilos then per kilo

Minimum charge (if applicable)

Remember to SAVE your changes before leaving this page or they will be discarded

Example:
Base 10 then charge 5 per item up to 3 items then 4 per item.
1 item = 15 2 items = 20 3 items = 25 4 items = 29

Global Pricing percentage alterations in Loadmaster

Here is account 'TEST' and pricing region 4

Create/Amend Accounts

General Billing **Charges** Notes Inv Notes Custom Fortec

Account Ref: TEST Zone: 4 NOT SET Replicate Save

STANDARD
Base: 0.00 Charge: 20.00 per item up to 1 items then 2.00 per item

SATURDAY
Base: 0.00 Charge: 0.00 per item up to 0 items then 0.00 per item

TIME-CHECK-FT!!!
Base: 0.00 Charge: 0.00 per item up to 0 items then 0.00 per item

SMDY
Base: 0.00 Charge: 0.00 per item up to 0 items then 0.00 per item

Weight
Base: 0.00 Charge: 0.00 per kilo up to 0 kilos then 0.00 per kilo

Minimum charge (if applicable): 0.00

Example:
Base 10 then charge 5 per item up to 3 items then 4 per item.
1 item = 15 2 items = 20 3 items = 25 4 items = 29

Save Close

Applying a 10% change

Customer Base Rate change

From Account: TEST Change

To Account: TEST Close

Percentage: 10.0

Confirm

Global Pricing percentage alterations in Loadmaster

Updated rates to region 1

Create/Amend Accounts

General Billing **Charges** Notes Inv Notes Custom Fortec

Account Ref: TEST Zone: 1 UK NORMAL ZONES Replicate Save

STANDARD
Base: 0.00 Charge: 11.00 per item up to 1 items then 1.10 per item

SATURDAY
Base: 0.00 Charge: 0.00 per item up to 0 items then 0.00 per item

TIME-CHECK-FT!!!
Base: 0.00 Charge: 0.00 per item up to 0 items then 0.00 per item

SMDY
Base: 0.00 Charge: 0.00 per item up to 0 items then 0.00 per item

Weight
Base: 0.00 Charge: 0.00 per kilo up to 0 kilos then 0.00 per kilo

Minimum charge (if applicable): 0.00

Remember to SAVE your changes before leaving this page or they will be discarded

Example:
Base 10 then charge 5 per item up to 3 items then 4 per item.
1 item = 15 2 items = 20 3 items = 25 4 items = 29

Save Close

Global Pricing percentage alterations in Loadmaster

Updated rates to region 4

Create/Amend Accounts

General Billing **Charges** Notes Inv Notes Custom Fortec

Account Ref: TEST Zone: 4 NOT SET Replicate Save

STANDARD
Base: 0.00 Charge: 22.00 per item up to 1 items then 2.20 per item

SATURDAY
Base: 0.00 Charge: 0.00 per item up to 0 items then 0.00 per item

TIME-CHECK-FT!!!
Base: 0.00 Charge: 0.00 per item up to 0 items then 0.00 per item

SMDY
Base: 0.00 Charge: 0.00 per item up to 0 items then 0.00 per item

Weight
Base: 0.00 Charge: 0.00 per kilo up to 0 kilos then 0.00 per kilo

Minimum charge (if applicable): 0.00

Remember to SAVE your changes before leaving this page or they will be discarded

Example:
Base 10 then charge 5 per item up to 3 items then 4 per item.
1 item = 15 2 items = 20 3 items = 25 4 items = 29

All the increased rates work in the same way.

After each alteration you should carefully check that you have achieved the result that you were after.